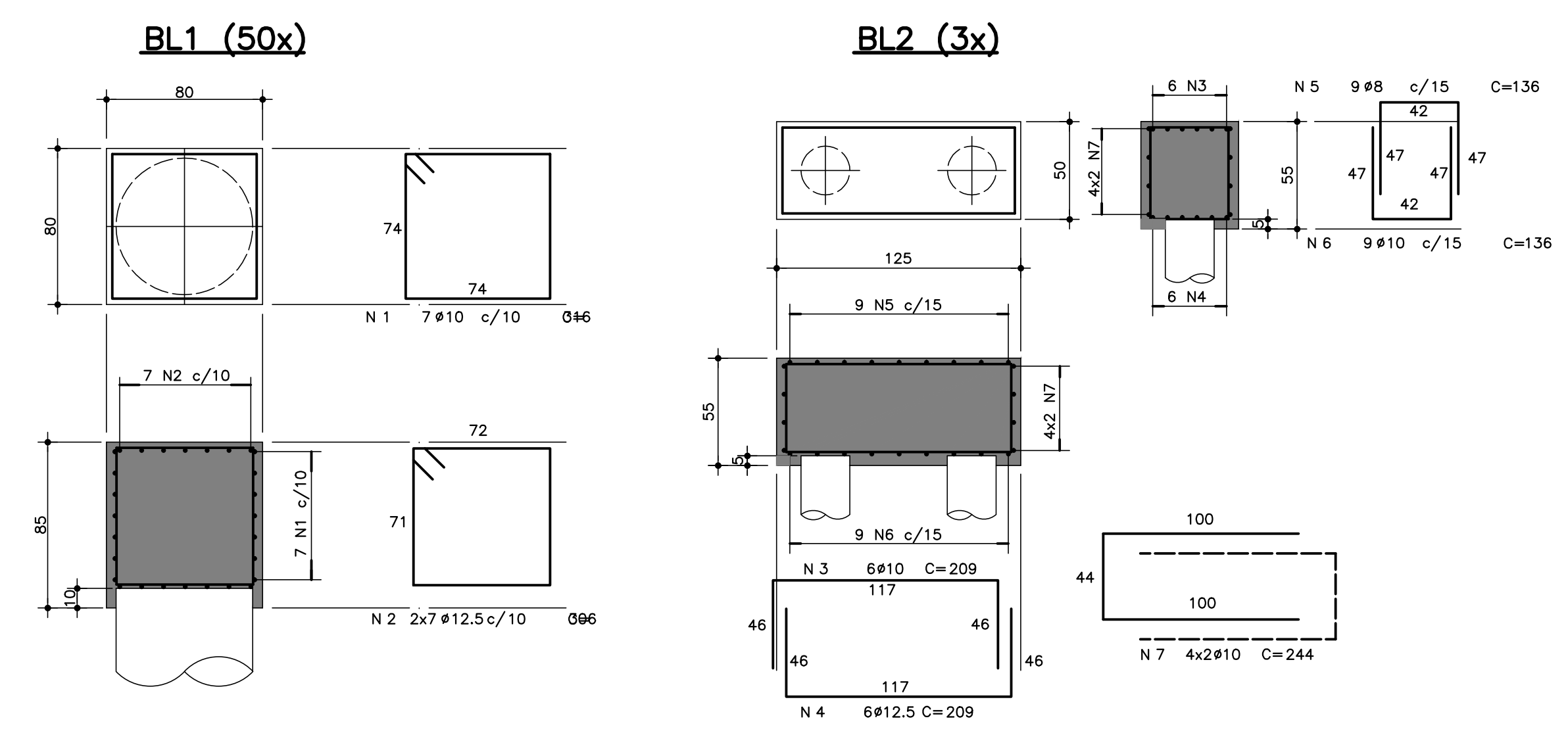


VB49			
N	Ø	Q	UNI TOTAL
1	12.5	2	471 942
2	12.5	1	280 280
4	10	2	550 742
4	12.5	2	550 742
5	10	2	290 580
6	6.3	1	138 138
7	5	49	102 4998
VB50			
N	Ø	Q	UNI TOTAL
1	8	2	163 326
2	10	2	173 346
3	5	9	82 738
VB51			
N	Ø	Q	UNI TOTAL
1	10	2	663 1326
2	12.5	4	663 2660
3	6.3	1	138 138
4	6.3	1	138 138
5	5	39	122 4758
VB52			
N	Ø	Q	UNI TOTAL
1	8	2	163 326
2	10	2	173 346
3	5	9	82 738
VB53			
N	Ø	Q	UNI TOTAL
1	12.5	2	569 1138
2	16	2	901 1802
3	16	1	781 781
4	12.5	2	654 1308
5	12.5	2	704 1408
6	12.5	2	585 1170
7	12.5	2	422 844
8	12.5	2	795 1590
9	12.5	2	634 1268
10	6.3	92	124 11408
VB54			
N	Ø	Q	UNI TOTAL
1	8	2	223 446
2	10	2	233 466
3	5	14	82 1148

RESUMO DAS VIGAS DA FUNDAÇÃO (03/03)			
ACO	Ø	COMPR(cm)	PESO(kg)
60B	5	12380	20
50A	6.3	11822	30
50A	8	1098	5
50A	10	3806	24
50A	12.5	13708	138
50A	16	2593	42
50A	20	-	-
50A	25	-	-
PESO TOTAL (kg)			259



LISTA DE FERROS			
POS.	Ø	QUANT.	COMPRIMENTO
		UNIT.	TOTAL
1	10	343	316 108388
2	12.5	886	306 209916
3	10	24	209 5016
4	12.5	24	209 5016
5	8	36	136 4896
6	10	36	136 4896
7	10	32	244 7908
RESUMO DE AÇO C.A. 50			
Ø	COMPRIMENTO (m)	PESO (kg)	
6.3			
8	48.98	20	
10	1261.08	794	
12.5	2149.32	2149	
16			
20			
25			
TOTAL (kg)		2963	